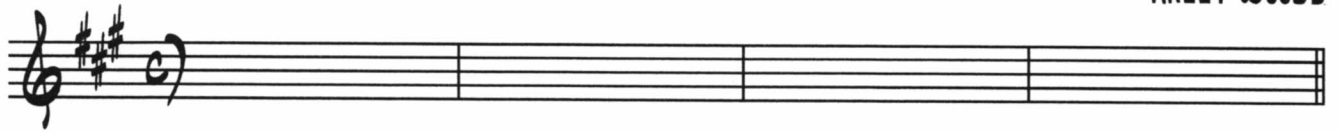


# WHAT A LITTLE MOONLIGHT CAN DO

HARRY WOODS



**A**

5 OOH, OOH, OOH, WHAT A LIT - TLE MOON - LIGHT CAN DO,

Chords: A6, C#MIN7, F#7, BMIN7

10 OOH, OOH, OOH,

Chords: E7, BMIN7, E7, BMIN7, BMIN7, F#7

15 WHAT A LIT - TLE MOON - LIGHT CAN DO TO YOU.

Chords: BMIN7, E7, A6, EMIN7

**B**

20 YOU'RE IN LOVE, YOUR HEART'S A - FLUT - TER AND

Chords: A7, DMA7, G9

25 ALL DAY LONG, YOU ON - LY STUT - TER 'CAUSE YOUR POOR TONGUE

Chords: A6, BMIN7, C#MIN7, F#7, B9

30 JUST WILL NOT UT - TER THE WORDS, "I

Chords: BMIN7, A#7

**C**

35 LOVE YOU." OOH, OOH, OOH, WHAT A LIT - TLE

Chords: BMIN7, C7, A6, C#MIN7

40 F#7 BMIN7 E7 BMIN7 E7  
 MOON - LIGHT CAN DO.

45 BMIN7 G#M7(b5) C#7  
 WAIT A WHILE, TILL A LIT - TLE MOON - BEAM COMES

49 F#MIN7 F7 EM11 A7  
 PEEP - - - - - ING THROUGH.

53 DMA7 G9  
 YOU'LL GET SOLO, YOU CAN'T RE - SIST HER, AND

57 A6 (G#7(#5) BMIN7 G7 C#MIN7 F#7  
 ALL YOU'LL SAY WHEN YOU HAVE KISSED HER IS

61 BMIN7 C#MIN7 F#7 BMIN7 E7  
 OOH, OOH, OOH, WHAT A LIT - TLE MOON - LIGHT CAN

65 A6 BMIN7 E7  
 DO.

**A** SOLO CHANGES

69 | A6 | C#MIN7 | F#7 | BMIN7 | E7 | BMIN7 | E7

77 | BMIN7 | BMIN7 F#7 | BMIN7 | E7 | A6 | EMIN7 | A7

**B** 85 | DMA7 | G9 | A6 | BMIN7 | C#MIN7 | F#7

93 | B9 | BMIN7 | A#o7 | BMIN7 | C°7

**C** 101 | A6 | C#MIN7 | F#7 | BMIN7 | E7 | BMIN7 | E7

109 | BMIN7 | G#M7(b5) | C#7 | F#MIN7 | F7 | EMI1 | A7

117 | DMA7 | G9 | A6 | (G#7(#5) BMIN7) | G7 C#MIN7 | F#7

125 | BMIN7 | C#MIN7 F#7 | BMIN7 | E7 | A6 | BMIN7 | E7